

BBright RMD

The BBright RMD is a powerful and versatile monitoring and analysis tool designed for HD, Full HD, and Ultra HD video workflows. Supporting ST 2110, SDI, ASI, SRT, and TS over IP inputs, the BBright RMD can be deployed in broadcast centers, master control rooms, and for remote production and contribution monitoring. BBright RMD can be deployed on-premises, in a private cloud, or in a public cloud such as AWS.

Engineered to handle Ultra HD, HDR, and NGA audio contribution feeds, it delivers comprehensive real-time monitoring via an intuitive web-based interface. It provides video preview, audio level meters, and metadata visualization, including support for Dolby DD, DD+, Dolby E, ED2, and AC-4. The system also features ETR 290 alarm monitoring and in-depth ancillary and metadata analysis.

This software-based solution is available in multiple configurations, enabling simultaneous analysis and monitoring of both compressed (TS, SRT, ASI) and baseband (ST 2110, SDI) signals. Whether deployed in a traditional broadcast facility or within a remote workflow, the BBright Monitoring Solution ensures reliable and in-depth signal analysis for high-quality content delivery.

KEY FEATURES

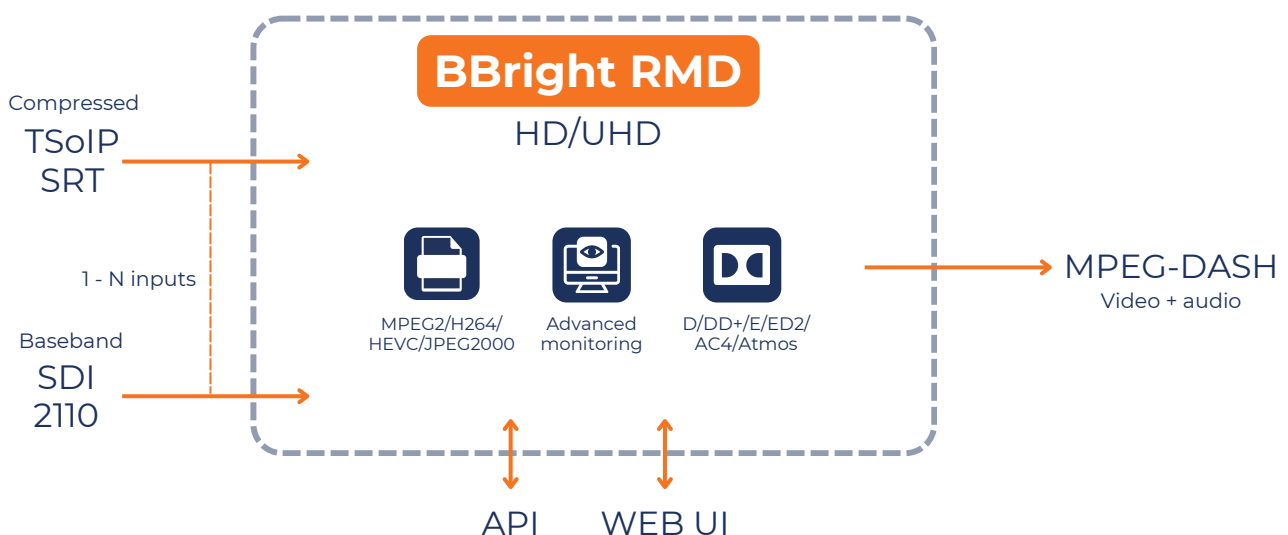
- TS/SRT/SDI/2110 sources monitoring
- Video/Audio/Metadata display
- Advanced log engine
- Mpeg-DASH preview
- Appliance, VM, & AWS

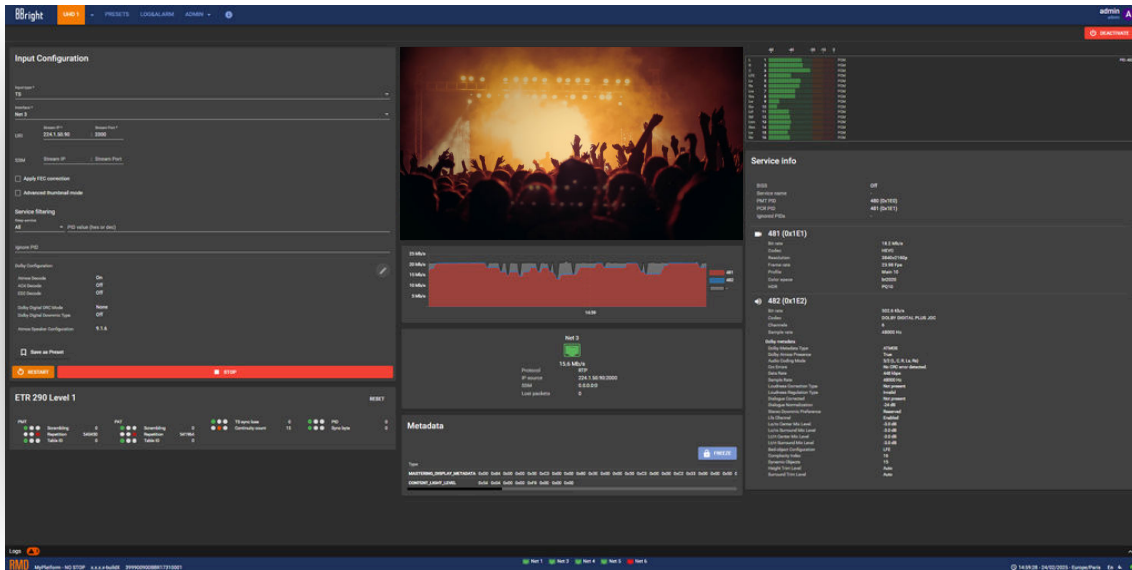
ADDED VALUE

- UHD
Up to Ultra HD & HDR
- Compressed & baseband
- Hybrid On Premise/Cloud
- Dolby AC4/Atmos/Vision

USE CASES

- MCR troubleshooting
- Remote site monitoring
- Dolby Audio advanced monitoring
- Cloud SRT monitoring





Video

- TS: Multi-Codec support: HEVC/H264/MPEG2
- HD/Full HD/Ultra HD and HDR ready
- 4:2:0/4:2:2, Up to 10bits
- HDR: HLG/HDR10/SLHDMI&2/Dolby Vision

Monitoring

- ETR 101-290 level1 input error monitoring
- Video Thumbnails + Audio Bargraphs
- Bitrate Graphs (per PID)

Inputs

- Multicast or Unicast TS over IP on dual Gb Ethernet ports
- SPTS or MPTS (PID Filtering)
- SDI: 8x 3GSDI ports (8xHD or 2xUHD)
- 2110: 8xHD or 2xUHD, with 2022-7 support
- 2022-7 seamless redundancy(TS & 2110)

Controls

- Intuitive Web UI
- Rest API

Audio

- Dolby DD/DD+/DD+JOC/Atmos/E/ED2/AC4 decoding
- Dolby Metadata display
- Up to 16 Audio Channels per stream
- AAC/HE-AAC/MPEG1 LayerII decoding

Ancillary data (SDI & 2110)

- Raw access to all SDI & 2110 Anc. Data

Outputs

- Video over Web UI (MPEG-DASH, up to 1080p)
- Audio streamed over Web UI (selectable stereo pair or downmix)

Virtual machine (VM)

- Default: VMWare/ ESXI
- Other VM formats available on request

Chassis (Appliance)

- 1 RU Chassis–Short Depth
- 437 mm x 287 mm x 43 mm
- 200W PSU