

BBright IP Gateway

The BBright IP Gateway is a powerful and versatile solution designed for seamless deployment of IP contribution services, handling both TS and SRT feeds with ease. More than just a simple IP gateway, it provides advanced monitoring capabilities, including real-time audio and video previews of managed content, ensuring full visibility and control.

Designed for maximum deployment flexibility, the BBright IP Gateway can be installed on-premises, in a private cloud, or in a public cloud such as AWS, adapting to any broadcast infrastructure.

Supporting IP streams up to Ultra HD, HDR, and NGA audio, it delivers a comprehensive monitoring suite through its intuitive web-based interface. Features include video preview, audio level meters, detailed audio metadata visualization (Dolby DD, DD+, Dolby E, ED2, and AC-4), ETR 290 alarm monitoring, and ancillary data analysis.

The BBright IP Gateway is the ideal solution for broadcasters and service providers looking to simplify IP-based contribution & SRT workflows while maintaining high-quality monitoring and reliability.




KEY FEATURES

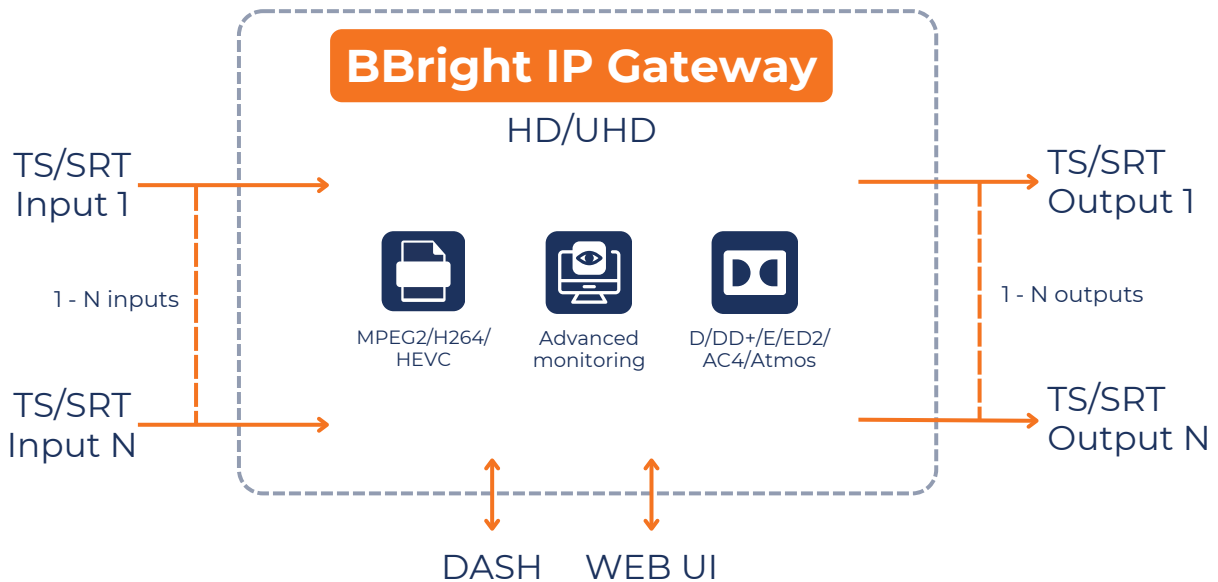
- SRT & Transport Streams
- Video, audio and metadata monitoring
- Appliance, VM, & AWS Marketplace (2025)

ADDED VALUE

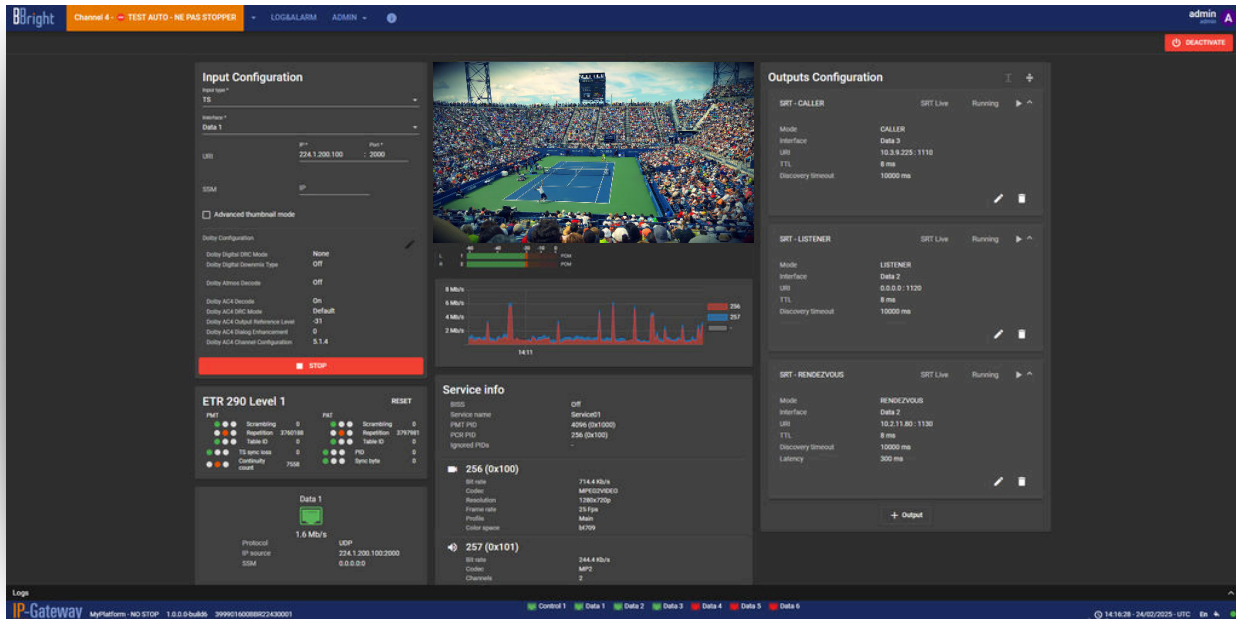
 Scalability	 Monitoring
 High density	 Hybrid on premise/cloud

USE CASES

- 
Live SRT transmission
- 
AWS Cloud contribution
- 
Satellite to SRT migrations



BBright IP Gateway



Video

- SRT & TS: Multi-Codec support: HEVC / H264 / MPEG2
- HD / Full HD / Ultra HD and HDR ready

Inputs

- Multicast or Unicast TS over IP
- 2022-7
- SRT (Listener / Caller / RendezVous)

Controls

- Intuitive Web UI
- Rest API
- NMOS
- Presets

Chassis

- Up to 6x Gbits Eth ports
- 1 RU Chassis – Short Depth
- 437 mm x 287 mm x 43 mm
- 200W PSU

Audio

- Dolby DD / DD+ / DD+JOC / Atmos / E / ED2 / AC4 decoding
- Dolby Metadata display
- Up to 16 Audio Channels per stream
- AAC/HE-AAC/MPEG1 LayerII decoding

Monitoring

- ETR 101-290 level 1 input error monitoring
- Video Thumbnails + Audio Bargraphs
- Timestamped logs
- Bitrate Graphs (per PID)

Outputs

- Multicast or Unicast TS over IP
- 2022-7
- SRT (Listener / Caller / RendezVous)