

DEC-400-HDMI

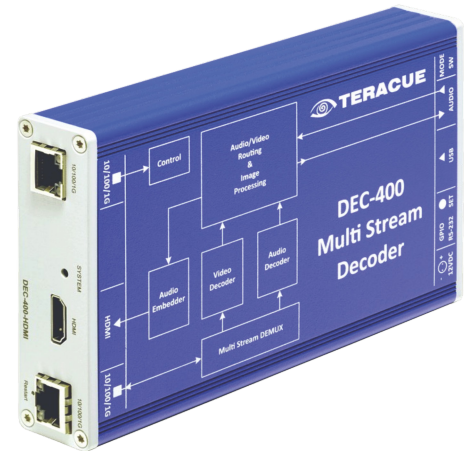
HD/SD H.264, MPEG-2 and NDI Decoder

PRODUCT DESCRIPTION

The DEC-400 decoder series is Teracue's counterpart to the ENC-400 encoder series. The DEC-400-HDMI is a livestream H.264, MPEG-2 SD/HD, NDI® and IPTV decoder for professional 24/7 use. The robust decoder offers features like low power consumption, video resolution up to 1200p and audio talkback. The combination of high quality streaming and simplicity enables a quick start-up with reliable performance.

Due to the compact fanless and lightweight aluminium chassis it's portable and flexible.

Alternatively the DEC-400 can be placed into the FR-620-EXT. This compact 1RU chassis houses up to 6 decoder blades and provides a redundant power supply.



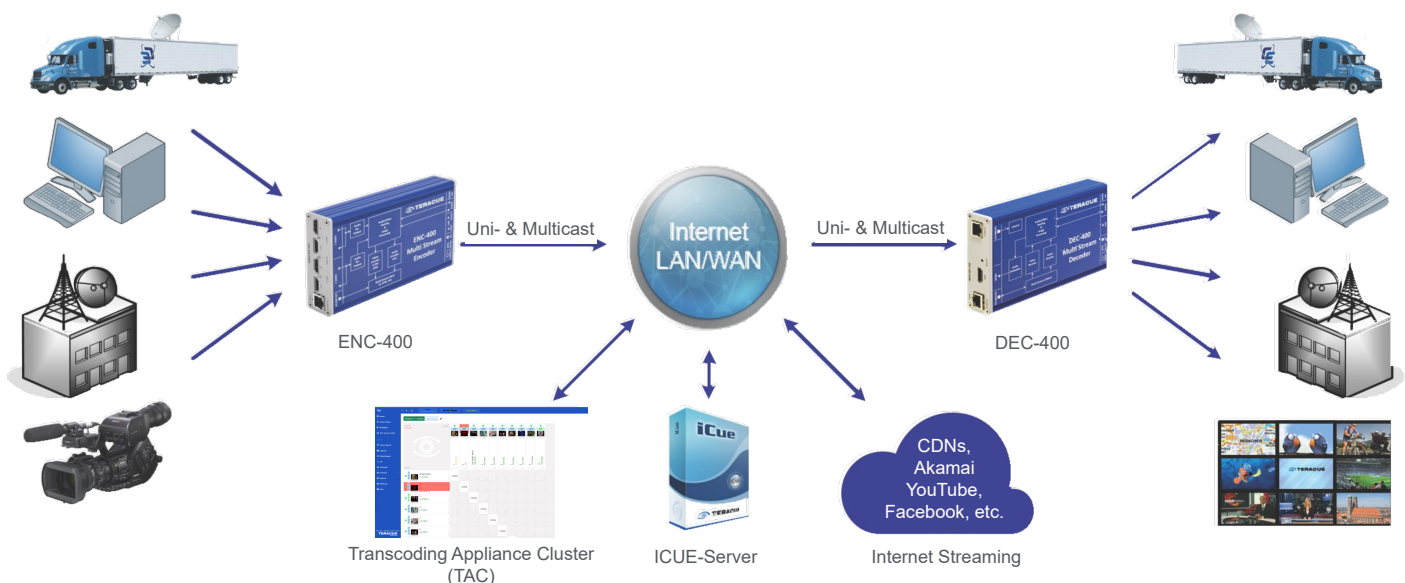
KEY FEATURES

- Robust hardware solution for 24/7 operation
- H.264 and MPEG-2 HD/SD decoder
- Supports NDI® decoding
- Low delay support
- Talkback for audio conferencing
- Export & import of presets
- UDP, RTP, RTSP, TCP, HLS, HTTP, SRT, FEC decoding
- Low power consumption (<12 watt)
- Management by web interface
- Picture-in-Picture (PIP)
- AES-256* decryption

APPLICATION

- IPTV solutions
- Control rooms & HQ surveillance
- AV over IP streaming
- Broadcast contribution
- Event webcasting & internet streaming
- Digital signage streaming
- Training & education
- Medical & campus TV
- Remote desktop streaming
- Wireless & mobile streaming
- Networked conference room

WORKFLOW INTEGRATION



*Some features will be released with future firmware updates

VIDEO I/O & DECODING

HDMI Video output:	1x HDMI 1.4b Output with embedded audio	
Video decoding:	H.264, MPEG-2, NDI®, 4:2:0, 8-Bit	
Profiles and standards:	H.264 (MPEG-4 AVC Part 10; ISO/IEC 14496-10) Baseline, main, high profile MPEG-2 (ISO/IEC 13818-2), main, high profile NDI® 3.7	
Video decoding bit rate:	300Kb/s – 16Mb/s, low delay support, CBR/VBR	
Supported video resolutions:	1200p (1920x1200) @60/50/30/25p 1080p (1920x1080) @60/50/30/25p 720p (1280x720) @60/50/30/25p	PAL (720x576) @50i NTSC (720x480) @59,94i
Inserters:	Inserter for custom logos, custom signal loss image	

AUDIO I/O & DECODING

Audio output:	1x Stereo (2 channel) embedded HDMI output 1x Stereo, unbalanced, AC-coupled, mini-jack 3,5mm, 10 kOhm MIC/LINE level: +4/0/-3/-6 dBu selectable	
Supported compression standards:	MPEG-4 AAC-LC, AAC-HE*, MPEG-1 Audio Layer II, AC3 (pass through)	
Sampling rate:	Sample rate 48 kHz, 16Bit, 32-320 kbit data rate	
Audio input (TALKBACK):	1x Stereo, unbalanced, AC-coupled, via mini-jack 3.5mm, Output gain: -78 dB to +9 dB 16 bit stereo, PCM, sample rate 48/44,1/32/16/8 kHz	

TS PROCESSING & NETWORK

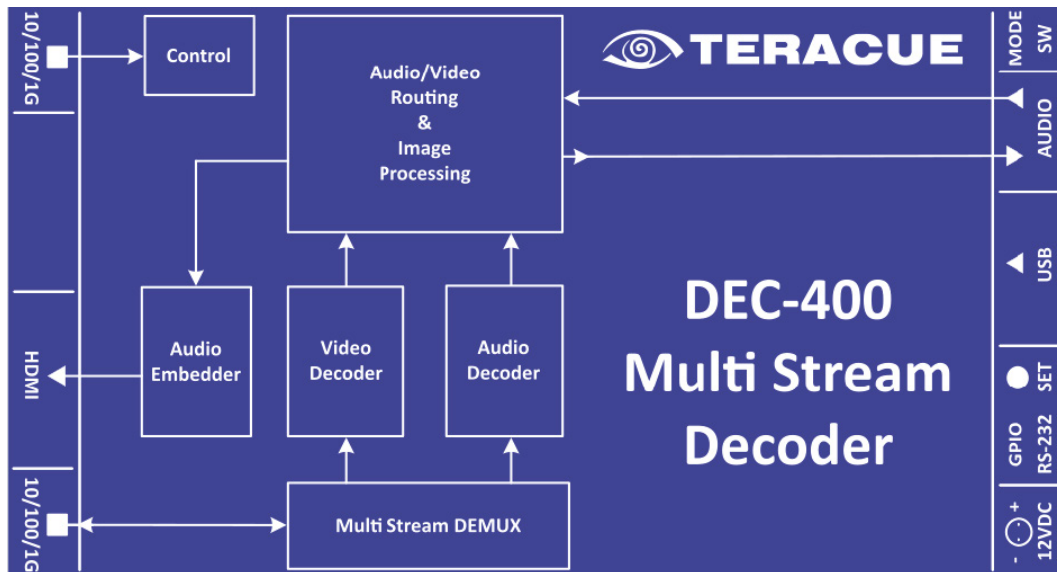
Network:	2x RJ45, 10/100/1000 TX Ethernet, half/full duplex, auto sensing or manual control	
IP Protocols:	HTTP, TCP/IP, UDP, IGMPv2/v3, SAP, Unicast/Multicast, DHCP, IPV4, DNS, NTP	
Streaming protocols:	UDP, RTP, RTSP, TCP, HLS, HTTP, SRT, FEC, NDI®	
Decryption:	AES-256*	
Management and security:	Web browser, software updates via web browser, log generation, REST API for web Services, authorization via password, IEEE 802.1X authentication, rotary switch with confirmation	

GENERAL

USB Port:	1x USB host for debugging	
Chassis:	PCB-Board or 100% lightweight closed aluminium case, fanless	
Dimensions and weight:	(H/W/D) 30mm x 105mm x 170mm, approx. 570 grams	
Agency approvals:	CE, RoHS, WEEE	
Temperature & humidity:	0 to +45°C, up to 90% RH, non-condensing	
Power:	12 VDC ≤ 12W per blade	
Limited warranty:	1 year standard limited warranty. Warranty extensions for up to 5 years available.	

*Some features will be released with future firmware updates

BLOCK DIAGRAM



DEC-400-HDMI block diagram

ORDER INFORMATION

DEC-400-HDMI (Portable)	H.264 and MPEG-2 HD/SD decoder blade with HDMI output, embedded audio Standalone portable decoder also available.
FR-620-EXT	1RU Rack mount chassis for max. 6 boards.

COMPLEMENTARY PRODUCTS

ENC-400-HDMI/HDMI2	H.264 and MJPEG HD/SD encoder board with single/dual HDMI input, loop through outputs and USB recording. Standalone portable encoder also available.
ENC-400-HDSDI	H.264 and MJPEG HD/SD encoder board with dual HDSDI input, loop through outputs and USB recording. Standalone portable encoder also available.
TERACUE APPLICATION CLOUD (TAC)	Stream routing and transcoding software for transmission and receiving widely used protocols and codecs e.g. UDP, RTP, TCP, RTSP, HLS, SRT, H.265, H.264 and MPEG-2.
ICUE-1000	IPTV Media Server: Live, VoD and scheduled playout streaming server software.